



雷線

BOYS

GIRLS AGES 12M-16Y

©SEW CHIBI DESIGNS PATTERNS 2019

FOLLOW US!



# terms of use

This pattern is intended for personal use only. Small-scale home based crafters are welcome to sell finished garments made with the pattern listed here but only if the listing includes a URL reference to the Sew Chibi Designs online shop ([www.sewchibidesigns.com/shop](http://www.sewchibidesigns.com/shop)) even if the pattern was modified and customized.

This pattern is not to be used for factory or mass production. The fonts used in this pattern and tutorial are intended for printing and viewing only. Do not attempt to create a new document or template utilizing any of the fonts used here. This free pattern has not been thoroughly tested so sew at your own risk.

All patterns, pictures and instructions are property of Sew Chibi Designs and Kataryna Borders and are protected by copyright law and should not be copied, reproduced or redistributed in any way without the consent of Kataryna Borders. All rights reserved.

Sew Chibi Designs and Kataryna Borders will not be held responsible for individual workmanship error, printing error, or human error. Thank you.

# contact

If you have any questions or comments, email us at: [sewchibidesigns@gmail.com](mailto:sewchibidesigns@gmail.com) or join the [Sew Chibi Designs Pattern Club](#) on Facebook where everyone can gather and discuss the patterns in a happy forum setting!

And if you want to keep up with everything **SEW CHIBI**, follow me these places too:

**BLOG:** [sewchibidesigns.com](http://sewchibidesigns.com)  
**INSTAGRAM:** [@sew\\_chibi](#)  
**FACEBOOK:** [Sew Chibi Designs](#)  
**PINTEREST:** [Chibi Designs](#)  
**TWITTER:** [SewChibiDesigns](#)

**#sewchibidesignspatterns**  
**#densensuspenders**  
**#prandpprojectstreetstyle**



FOLLOW US!



# get to know the pattern!

The Densen Suspenders are a fun, adjustable, mix-matched accessory for kids of all genders and ages! Wear them up, down, on one shoulder, cross chest, or however else you like! This free pattern is part of the Project Run & Play's Designer Capsule Streetwear Collection. Be sure to check out my official pattern in the collection, the Senpai Bomber Jacket, and the rest of the patterns by clicking [here](#).

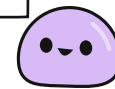
## notes



difficulty level: novice/beginner

**\*\*\*MAKE SURE TO READ ALL OF THE INSTRUCTIONS THOROUGHLY BEFORE GETTING STARTED.\*\*\***

- For best resolution, open Adobe Reader, click "ctrl. (or cmd.)+ k" and change resolution to 300ppi.
- **Difficulty Level:** novice/beginner
- **Seam allowances are 1cm (3/8") unless otherwise noted.**
- Basic sewing equipment (sewing machine, thread, sewing needles, scissors, pins, etc. as well as printer, printing paper and tape)
- Always check the size chart notes before deciding on what size to cut.
- Iron all your seams and clip all of your thread trails as you go. Don't wait until the end.
- **When the left or right side of something is mentioned, it is from YOUR point of view, not the wearer.**



FOLLOW US!

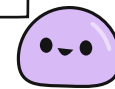
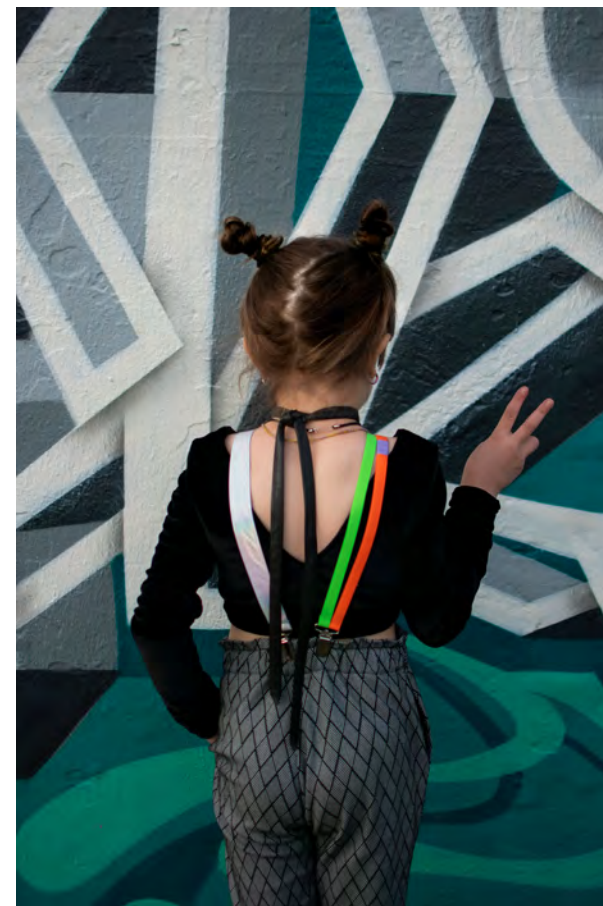
f



# pattern overview!



- mix-match the straps, single set the wide straps, or double set the single straps
- adjustable sliders



FOLLOW US!



# size chart

The measurements listed below are for the child; **they are not reflective of the finished garment.** Please refer to the notes below this chart before picking a size! I color coded the chart so you know your size color for reference purposes, too! When choosing, pick the **widest** measurement of your kid (chest, waist, or hips; whichever measurement's the largest) then shorten/lengthen as needed at the designated lines on the specified pattern pieces. Finished garment sizing can be found on [page 17](#). If you want a looser fit, size up. *Be aware the finished length is reflective of an excess to accommodate sliding to adjust as needed.*

SIZE	12-18M	2T	3T	4T	5Y	6Y	7Y	8Y	9/10Y	11/12Y	13/14Y	15/16Y
height (in/cm)	31.5"	35.5"	38.5"	41.5"	44"	46"	49.5"	52"	55"	58.5"	60"	63"
	80cm	90cm	98cm	105cm	112cm	117cm	126cm	132cm	140cm	149cm	152cm	160cm

# finished garment dimensions

SIZE	12-18M	2T	3T	4T	5Y	6Y	7Y	8Y	9/10Y	11/12Y	13/14Y	15/16Y
length (in/cm)	21"	22.625"	24.25"	25.625"	27.25"	28.75"	30.25"	31.625"	33"	34.25"	35.75"	37"
	53.5cm	57.5cm	61.5cm	65.1cm	69.1cm	73cm	76.7cm	80.2cm	83.7cm	87.2cm	90.7cm	94cm



FOLLOW US!



## notions + supplies

- universal needle size 80 or 90 needle
- Length of 22" (56cm) by approx. 1/3yard (30cm) wide of fabric \*see note below
- lightweight interfacing for light to medium weight fabrics
- 1 set 2.54cm (1") adjustable slider/buckle (2 total clips)
- 2 sets of mitten clips 2.54cm (1") (4 total clips)

## fabric recommendations

**-STRAP FABRICS:** Light to heavyweight woven fabrics, quilting cotton, broadcloth, poplin, leather, vinyl, canvas, denim, twill, etc. *If using heavyweight fabric, you can skip adding interfacing.*

\*Since the pieces can be very long, cutting the fabric on the crosswise grain is also acceptable. In this case, a 1/3 of a yard (30cm) of fabric at least 44" wide is required.

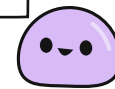
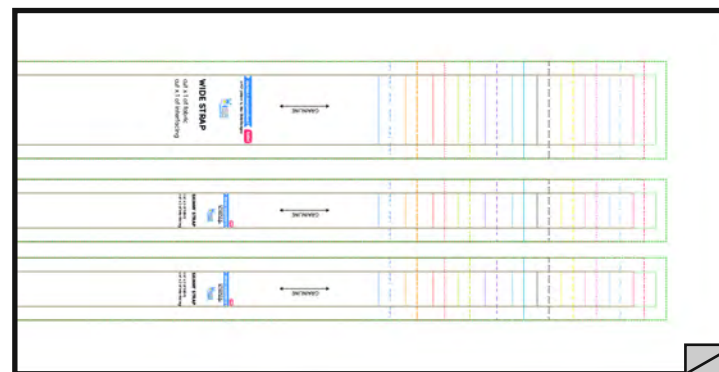
**\*\*\* ALWAYS PREWASH & DRY YOUR FABRIC BEFORE YOU START CUTTING INTO IT TO AVOID SHRINKAGE AFTER SEWING.** If your fabric is prone to considerable shrinkage when washed, you may want to buy additional yardage.

## printing sizes separately

**This pattern is layered!** You can print just the layer (size) you need! Just be sure to leave the "DO NOT UNCHECK" visible! If you uncheck, you will miss all the pattern markings and names! HIGHLY RECOMMEND THIS FEATURE!

## layout instructions!

**T**his cutting diagram gives you an idea of how to maximize your yardage efficiently. Some of the pieces are singular.



FOLLOW US!

f

📷

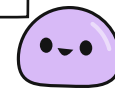
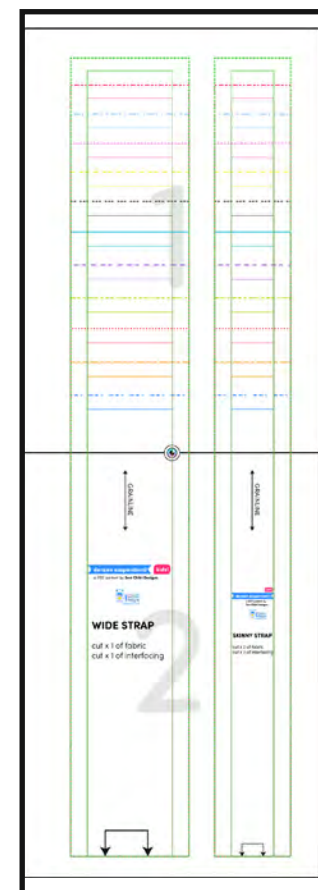
p

🐦

✉

# printing instructions & pattern assembly

1. Cut or fold edges (I recommend folding so if you make a mistake, you can easily fix it).
2. Match up and align the eyeballs and pattern lines for all pieces, following the layout diagrams.
3. Tape pages together.
4. Trace or cut sizes needed. If you will only need one size, I suggest just printing out that layer. Making more than one size, print the sizes you need (leave just those size layers visible) and then trace them onto freezer paper or preferred pattern drafting paper. This reduces the amount of printer paper used and saves more trees!
5. All the pattern pieces are labeled and numbered for your convenience.
6. This pattern can be printed on letter or A4 size paper.
7. DO NOT SCALE. Choose "Print at 100%" or "No scaling" option in your printer's settings.
8. Print the first page of the pattern first, then measure the test square provided to ensure that the pattern will print correctly.
9. Refer to the full assembly overview on the right (or attached .png file) if needed.



FOLLOW US!

f

📷

p

🐦

✉

# glossary of sewing terminology

**BASTING STITCH:** Temporary stitching used to hold a sewing project in place and is removed when the permanent stitching is done. Use your longest stitch settings and do not backstitch so they can be removed easily.

**CROSSWISE GRAINLINE:** The grain line of the fabric is the direction that the fibers align along the WIDTH of the fabric. It is perpendicular to the selvage edges of the fabric.

**GRAINLINE:** The grain line of the fabric is the direction that the fibers align along the LENGTH of the fabric. It is parallel to the selvage edges of the fabric. It is important that pattern pieces match the grain line marked on the pattern. This will ensure that it hangs correctly and does not twist.

**INTERFACING:** Sew-in or fusible fabric used to stabilize fashion fabrics. This can also add body or reinforcement.

**OVERLOCK:** Finishing technique sewn over the raw edge of the seam allowance. This is the preferred way to finish edges if you own a serger.

**RAW EDGE:** Unfinished, cut edge of fabric.

**RSO:** Right Sides Out. This abbreviation refers to the front or printed sides of a fabric facing outward.

**RST:** Right Sides Together. This abbreviation refers to the main or printed sides of a fabric facing each other in order to be sewn so that the main sides are facing out.

**SEAM ALLOWANCE:** The portion of the pattern edge determining the amount of excess fabric needed to stitch a particular seam to the line of stitching.

**TOPSTITCH:** A line of stitching that runs parallel to a fold line or a seam line. Because topstitching shows on the finished products, it is important that the stitches are even. Stitch on the RIGHT side of the fabric using the fold line or seam line and presser foot as a guide to maintain the same distance throughout the topstitching.

**WSO:** Wrong Sides Out. This abbreviation refers to the back or unprinted sides of a fabric facing outward.

**WST:** Wrong Sides Together. This abbreviation refers to the back or unprinted sides of a fabric facing together to be sewn for various reasons.

## SEWING INSTRUCTION ABBREVIATIONS:

CF: CENTER FRONT   CB: CENTER BACK   RS: RIGHT SIDE   SA: SEAM ALLOWANCE   WS: WRONG SIDE

SEAM ALLOWANCES ARE 1CM (3/8") UNLESS OTHERWISE NOTED.

#densensuspenders

#sewchibidesignspatterns





FOLLOW US!



# speedy sewing steps:

If you are feeling extra adventurous or you've made the pattern before, here's a quick rundown of the steps! **Always refer to the illustrated instructions when needed.**

**Step 1.)** Cut out and interface the pattern pieces.

**Step 2.)** Fold and press to WS.

**Step 3.)** Press in half lengthwise.

**Step 4.)** Topstitch.

**Step 5.)** Mark orientation.

**Steps 6-8.)** Thread and fasten strap through slide adjusters and mitten clips.

## your personal notes!

To use this feature in Adobe Reader, click the "comment" bubble in Tools and "add text comment" OR you could print just this page and keep it with the pattern!

Handwriting practice area with horizontal dotted lines and three circular markers for bullet points.

**Make sure you have read all of the previous instructions thoroughly before cutting your fabric and sewing!**

And, once again, if you have any questions or comments, email us at: [sewchibidesigns@gmail.com](mailto:sewchibidesigns@gmail.com) or join the [Sew Chibi Designs Pattern Club](#) on Facebook and search to see if your question has been answered there!



# steps 1-3: prep fabrics + press straps

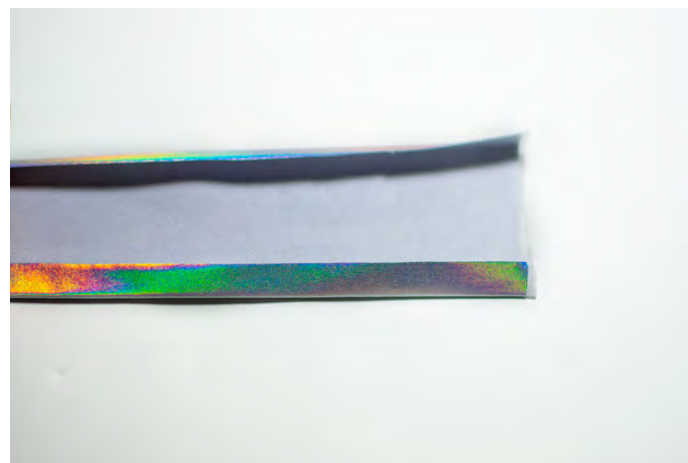
1.

-(not pictured) Cut out all of the pieces needed, and apply your fusible interfacing (according to the package directions) to the WS the straps, 1/8" (1cm) in from all edges.

-(Opt.) Finish the short, raw edges of your strap ends with a serger or zig-zag stitch. Alternately, you could turn the short ends towards the wrong side by 6mm (1/4") twice, then topstitch the long edges. Press. Repeat for remaining straps.

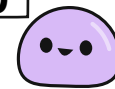
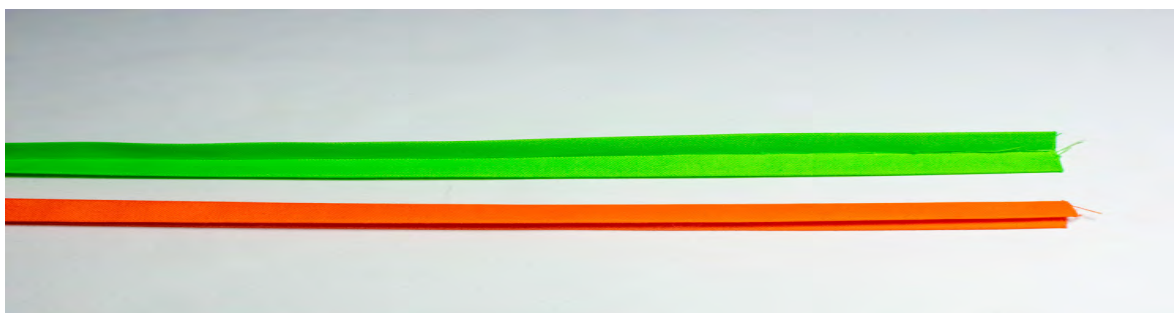
2.

-Fold and press along the long edges towards the WS by 1cm for all pieces.



3.

-Fold and press in half lengthwise. sew both long edges. Repeat for all pieces.

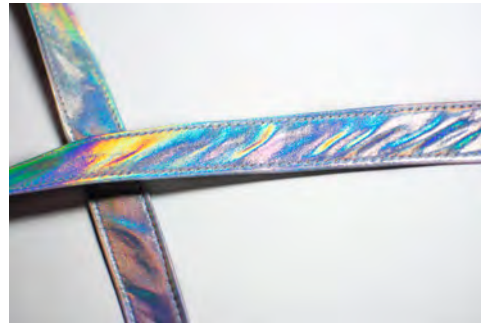


# steps 4-6: sew the strap + fasten to slide adjusters



4.

-Topstitch along all long edges of the straps. You might want to use matching bobbin thread. Press.



5.

-Lay one of your straps out RS facing out. Mark the left with a small "L" and the right with a small "R" on the RS.



6.

-With the RS facing out, Insert the Right strap end up and over the middle bar on the slide adjuster, pulling it through about 5cm (2"). WSF, Stitch short ends in place

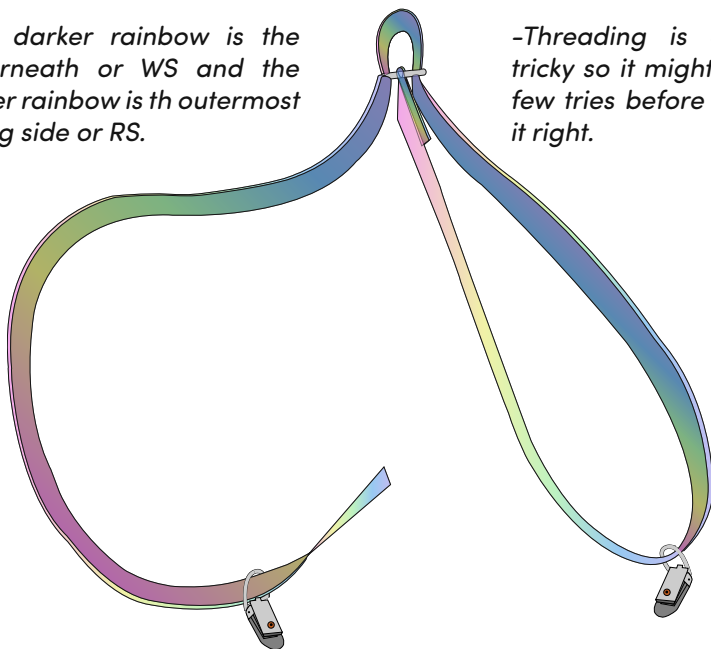


## steps 7: thread the strap.

7.

\*The darker rainbow is the underneath or WS and the lighter rainbow is the outermost facing side or RS.

-Threading is a little tricky so it might take a few tries before getting it right.



-First clip aimed towards the slide adjuster.

-Insert the first mitten clip facing away from the left short end (opposite the slide adjuster end) RSF up. See the picture on the right.

-Pull the strap through the underneath of the slide adjuster opening, over the middle bar (where the Right end is stitched), and back down and through the remaining open space of the slide adjuster.

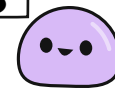


## step 8: fasten the opposite clip

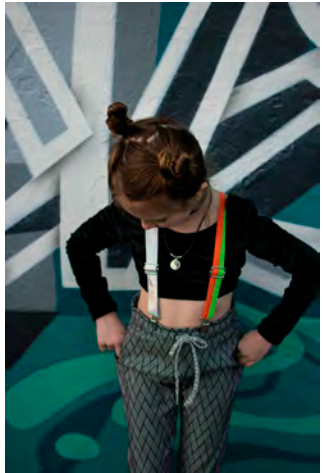
8.



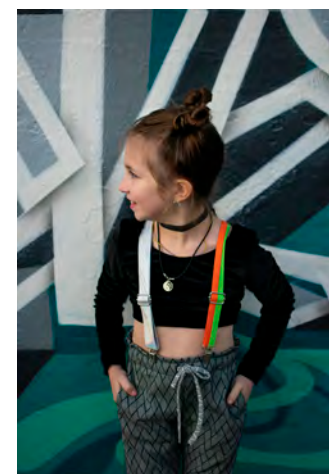
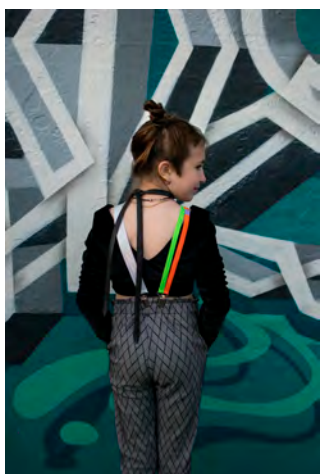
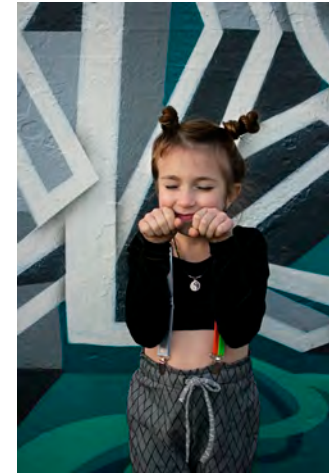
- Thread the Left strap end through the Left mitten clip as shown above. from the RS matching the underneath.
- Pull it through about 1" and sew it WST to the strap.
- Compare your finished strap to the one on the right. Repeat for remaining straps.
- Your suspenders are complete!



FOLLOW US!



project streetwear free pattern:  
**SEW CHIBI DESIGNS  
DENSEN SUSPENDERS**



FOLLOW US!



## about the designer!

**H**i there! I'm Kat, the neon mastermind behind **Sew Chibi Designs!** I started blogging in 2012, always focusing on the **colorful, the geeky, and the kawaii!** I'm a sucker for all things **anime, Asian dramas (particularly Taiwanese),** and a ton of other fandoms! My muses are my three girls, and **my mission is to create things for them that they want to wear: fun, full of surprises and silly!** Sew Chibi Designs Patterns are just that: **super cute, a little weird, and ultra happy!** I collaborate with my girls on what their vision is for a project so that I know that it not only is kid approved but guaranteed to be something that they love! Sewing is an artistic expression for us here, so, while we strive for perfection, we embrace our mistakes. Some of my favorite ideas were born from imperfection! All of the graphics and photography are created by me as well! I want my patterns to make you feel excited to follow along and anticipate not only what the next pattern will be, but what the instructions will look like too... like **a retreat to a magical, technicolor, sewing world** perfect for an afternoon escape! Sew Chibi Design Patterns are full of elements to add or omit to make an outfit that feels uniquely your own! I sure hope you liked this pattern as much as I did creating it, and I look forward to making many, many more for you!

Hugs + stitches, Kat!



**sewchibidesigns!**

a *lovely* take on the modern make!

Thank you, again, for making the Densen Suspenders! Please be sure to share your creation with me (@sew\_chibi) on Instagram using these hashtags:

#desensuspenders

#sewchibidesignspatterns

15

